

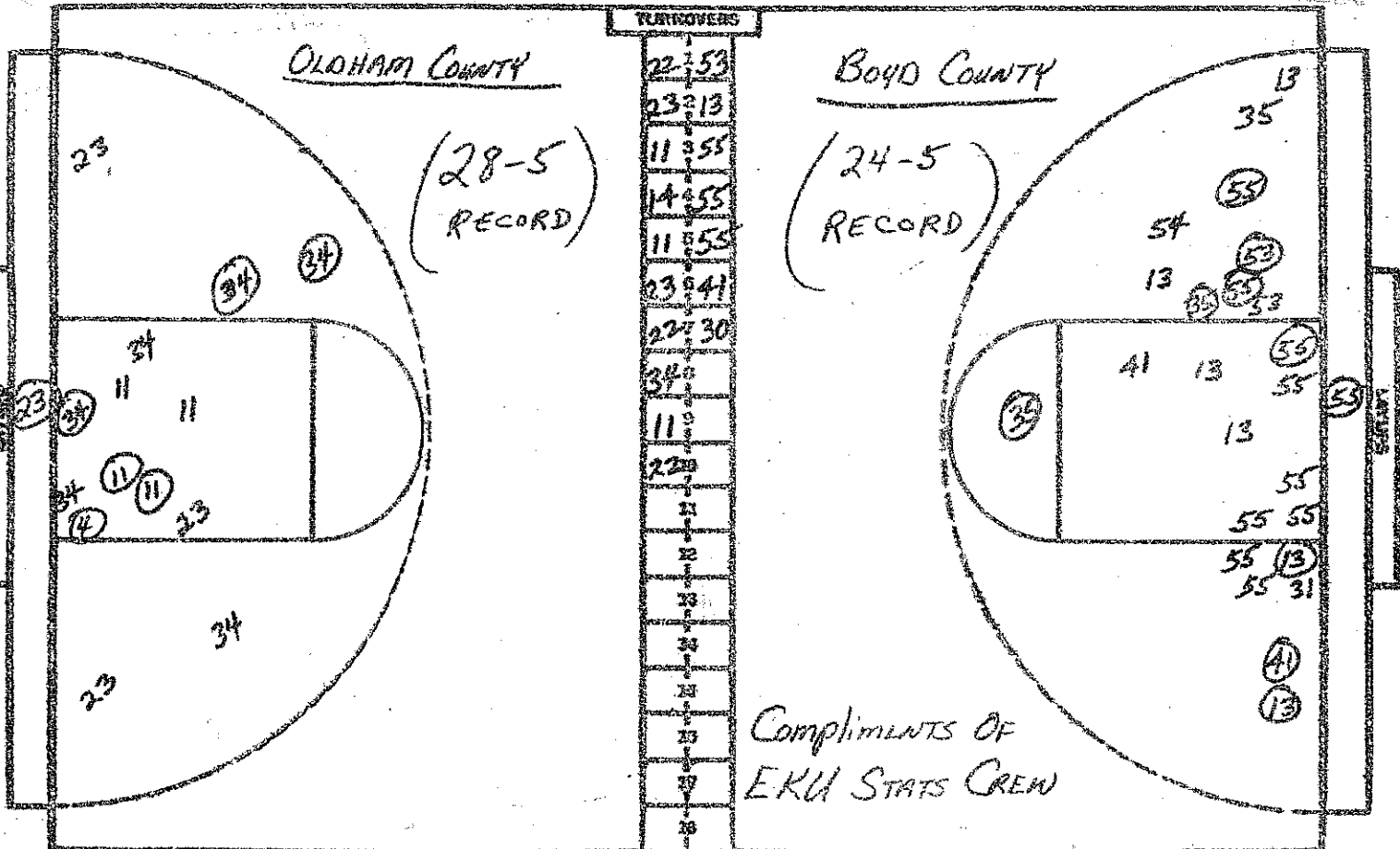
NO.	Boyd Count/	FG-FGA	FT-FTA	REB	P	TP	A
41	Carla Weyant	1-3	0-0	0	1	2	0
53	Suzanne Vanhose	0-3	0-0	2	3	0	0
55	Melanie May	0-4	0-0	8	2	0	1
13	Brandy Boggs	3-9	0-0	0	2	6	2
53	Jayna Clark	3-3	0-0	1	0	6	0
41	Tammy Alley	-	-				
57	Kelli Clark	-	-				
44	Kim Crager	0-0	0-0	0	2	0	0
		-	-				
54	Susan Skarps	0-0	0-0	1	0	0	0
33	Kim Ward	-	-				
20	Dana Young	-	-				
		-	-				
	D.S.	-	-	0			
TOTALS		7-22	0-0	12	10	14	3

NO.	Oldham County	FG-FGA	FT-FTA	REB	P	TP	A
24	Anne Estes	0-0	0-0	2	0	0	0
23	Viv Bohon	4-6	0-2	2	0	8	3
11	Nathy Stifes	2-6	3-4	4	0	7	0
34	Rita Berry	3-5	2-4	3	2	8	2
44	Lori Oldham	0-0	0-1	2	1	0	1
22	Missy Shumway	0-0	2-2	2	0	2	0
4	Stella Wagner	-	-				
25	Ann Wesley	-	-				
44	Mimi Olive	-	-				
13	Julia Prather	-	-				
21	Denise Carroll	-	-				
31	Debbie Cantrell	-	-				
		-	-				
	D.B.	-	-	1			
TOTALS		9-17	7-13	16	3	25	6

PERCENTS 30.8 00.0 0 TEAM REBOUNDS (NOT IN TOTAL)

PERCENTS 52.9 53.8 1 TEAM REBOUNDS (NOT IN TOTAL)

SCORE BY HALF: Boyd Co. 4-10=14 Oldham Co. 11-14=25
 OFFICIALS: Pat Rayburn & Doug Allen



NO.	Oldham County	FG-FGA	FT-FTA	REB	P	TP	A
21	Anne Estes	0-0	0-0	2	0	0	0
23	Viv Bohon	5-10	1-4	4	2	11	5
11	Nathy Stiles	4-10	8-9	6	2	16	0
34	Rita Berry	6-11	4-6	6	2	16	3
41	Lori Oldham	0-0	0-1	2	1	0	1
22	Missy Shumway	0-0	2-4	5	0	2	0
4	Stella Wagner	1-1	0-0	0	0	2	0
25	Amy Wesley	-	DNP				
44	Mimi Olive	-	DNP				
13	Julie Prather	-	DNP				
21	Denise Carroll	-	DNP				
31	Debbie Cantrell	-	DNP				
		-	-	2			
		-	-	2			
TOTALS		16-32	15-24	27	7	47	9

NO.	Boyd County	FG-FGA	FT-FTA	REB	P	TP	A
41	Carla Jewitt	2-5	0-0	1	3	4	0
53	Suzanne Vanhoose	1-5	0-0	8	5	2	0
53	Melanie May	4-14	2-2	15	3	10	2
13	Mindy Boggs	5-16	0-0	1	5	10	5
35	Jayna Clark	5-7	0-0	2	0	10	1
40	Tansy Alley	-	DNP				
51	Kelli Clark	-	DNP				
44	Kim Crager	0-0	0-0	0	2	0	0
		-	DNP				
51	Susan Skaggs	0-1	0-0	1	1	0	0
33	Kim Ward	-	DNP				
30	Dana Young	0-1	0-0	1	0	0	0
		-	-				
		-	-	0			
TOTALS		19-49	2-2	29	19	36	8

PERCENTS 50.0 62.5 1 TEAM REBOUNDS (NOT IN TOTAL)

PERCENTS 34.7 100.0 0 TEAM REBOUNDS (NOT IN TOTAL)

Score by ~~Boyd Co.~~ 4-10-12 = 36
 Oldham Co. 11-14-10-12 = 47
 OFFICIALS: Pat Rayburn + Doug Allen
 ATTENDANCE: 2,200 EST.